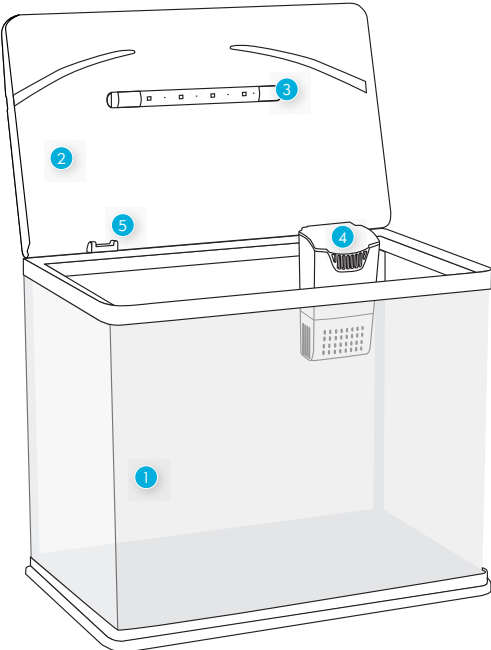
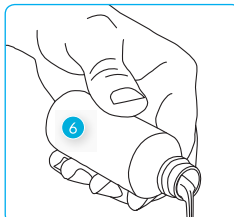


## GETTING TO KNOW YOUR AQUARIUM



Part Description	Spares Code		
	Essential Kit 3.5 GAL	Essential Kit 5.5 GAL	Essential Kit 8 GAL
Life Flow Cartridge	Single: 70103 Triple: 70104	Single: 70103 Triple: 70104	Single: 70105 Triple: 70106
Phosphate Remover Pad	-	-	-
Annual Replacement Impellor	70128		70121
Replacement LED	70360		70361



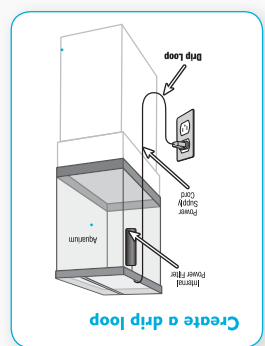
Part No.	Part Description
1	Glass Aquarium
2	Aquarium hood
3	Ultra-bright LED
4	Internal Power Filter
5	Cartridge Filter Locations
6	Life Care Tapsafe
7	Quick Setup Guide

## SAVE THESE INSTRUCTIONS

**WARNING:** To guard against injury, basic safety precautions should be observed, including the following.

**READ AND FOLLOW ALL SAFETY INSTRUCTIONS**

**DANGER** – Special care should be taken to avoid possible electric shock, since water is employed in the use of aquarium equipment. Do not attempt any repairs by yourself; return the appliance to an authorized service facility for service or discard the appliance.



- Close supervision is necessary when any appliance is used by or near children.
- To avoid injury, do not contact moving parts directly.
- Carefully examine the product after installation, it should not be energized if there is water on parts not intended to be wet.
- Always unplug an appliance from an outlet when not in use, before putting on or taking off parts, and before cleaning, never yank cord to pull plug from outlet. Grasp the plug and pull to disconnect.
- Do not use an appliance for other than intended use.
- Read and observe all the important notices on the appliance.
- Do not pump flammable or heated liquids.
- DO NOT RUN DRY.**
- Do not connect to any voltage other than shown on the pump.
- Ensure that the power supply cord loops below the electrical outlet to form a "drip loop". This will prevent water from running down the cord into the electric outlet.

QUESTIONS OR SPARE PARTS, VISIT [www.interpetlife.com](http://www.interpetlife.com)

## IMPORTANT SAFEGUARDS

## TROUBLESHOOTING

### Problem 1: Power cut

Solution: Any interruption of more than 2-3 hours of the water supply through the filter will cause the bacteria in the filter to die. Should this occur, do not simply re-start the filter. You must thoroughly clean ALL the filter material and start the filter again. In an aquarium fully stocked with fish, this may lead to water quality problems. Use test kits to monitor water, use Ammonia Remover products to manage the water quality.

### Problem 2: Why has the LED lighting stopped working

Solution: Check all plugs are firmly pushed into sockets. Check connection of low voltage plug in back of hood. Check mains power supply has not been interrupted.

### Problem 3: Why is the LED light output reducing / failing

Solution: Refer to problem 2, if this does not work the LED lighting tube is nearing the end of its life span and will need replacing. Refer to section 1 for the relevant Interpet spare codes and purchase a replacement tube visit [interpetlife.com](http://interpetlife.com).

**For Interpet Internal Power Filter troubleshooting, refer to the individual filter quick start guide.**

## WARRANTY

Interpet Limited warrants this product against defects in materials or workmanship for a period of 12 months from the date of original purchase. The warranty covers only any defects caused during normal use and operation of the aquarium, in accordance with the instructions enclosed.

If the product exhibits such a defect, Interpet Limited will repair or replace it without cost for parts or labour. The product must be shipped post-paid to Interpet Limited. Proof of purchase is required. This warranty does not apply to problems or damage caused by unauthorised modifications, misuse, improper or inadequate maintenance, accidents, or operations outside the product instructions or specifications.

All implied warranties, including any implied warranty of merchantability or fitness for any purpose, are limited to 12 months from date of original purchase.

The warranty service includes repair or replacement of the aquarium at Interpet Limited discretion. In no event shall Interpet or the manufacturer be liable for any direct, indirect, special, incidental or consequential damages, including loss of livestock, arising from a defect in this product.

Some states do not allow the exclusion or limitation of incidental or consequential damages, so the above limitation may not apply to you if you purchased the product in one of those states. This warranty provides specific legal rights. You may have other legal rights that vary from state to state.

Questions or need spare parts, please visit [www.interpetlife.com](http://www.interpetlife.com)



Interpet has applied over 60 years of aquatic experience to ensure every element of the design of this product has been carefully considered to help you enjoy aquarium keeping.

☎ 844-660-FISH (3474)

Interpet Ltd, Vincent Lane, Dorking, Surrey  
RH4 3YX, England, UK

[www.interpetlife.com](http://www.interpetlife.com)

Version 0001



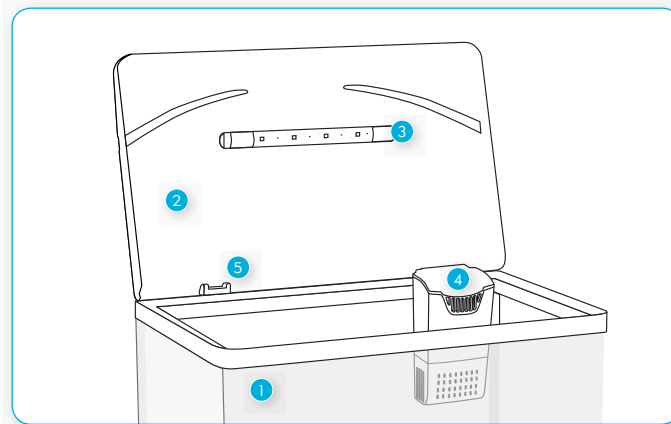
## Life LED Aquarium Essential Kits

Instruction sheet  
& quick start up guide



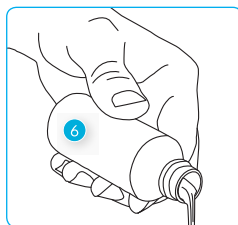
SETS UP  
IN MINUTES

## 1. PART CHECKS



Models 3.5, 5.5 & 8 US Gallons

Part No.	Part Description
1	Glass Aquarium
2	Aquarium hood
3	Ultra-bright LED
4	Internal Power Filter
5	Cartridge Filter Locations
6	Life Care Tapsafe
7	Quick Setup Guide



**QUESTIONS OR SPARE PARTS,  
VISIT [www.interpetlife.com](http://www.interpetlife.com)**

## 2. AQUARIUM LOCATION

- Ensure the aquarium is placed on a level surface suitable for bearing the weight of a full aquarium, eg. 88lb is for an 8 gallon aquarium.
- The aquarium should not be placed in direct sunlight, areas of extreme temperature change or areas subject to loud noise or vibration.

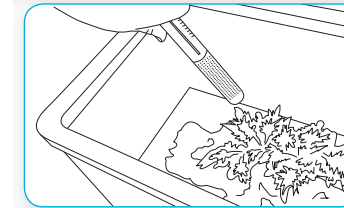


## 3. AQUARIUM SETUP

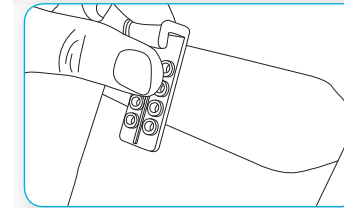
- Pre wash and fill aquarium with décor, rocks and gravel.



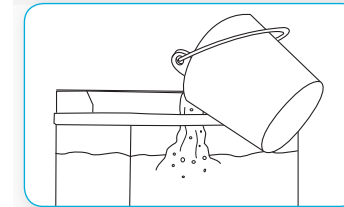
- Install optional heater (not included) for tropical fish. DO NOT TURN ON YET.



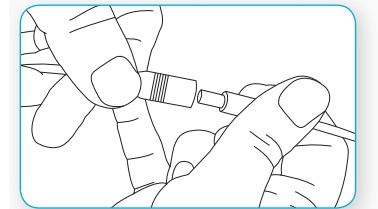
- Attached locator hook onto Internal Power Filter and fit onto either aquarium filter location (5). DO NOT TURN ON YET.  
Note: Max water level line on the filter



- You can then fill your aquarium with tap water treated with Interpet Tapsafe water dechlorinator.



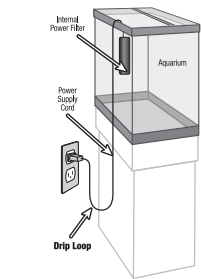
- Connect the low voltage transformer to the Ultra-bright LED.



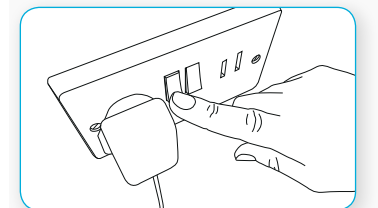
### Important safety information

To prevent any drips entering electrical socket, create a drip loop for the filter, heater and LED cable.

### Create a drip loop



- Then when safe turn on equipment and allow aquarium to settle overnight.



- Next day, add live plants and then visit [www.interpetlife.com](http://www.interpetlife.com) to find out how to successfully introduce fish.

## 4. MAINTENANCE ROUTINE

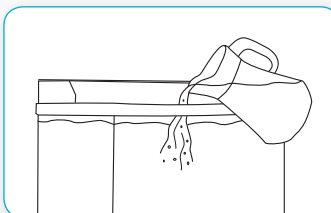
### A. Daily care

Ensure the filter is working correctly  
Feed fish & check fish health  
Always remove dead fish  
Check water temperature is correct and stable



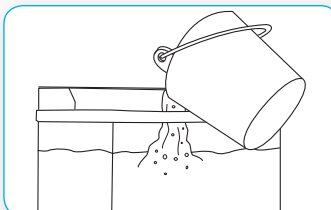
### B. Weekly care

Top up any water evaporation in the aquarium  
For live plants, add a plant food  
Clean the Ultra-bright LED with a soft cloth  
Use a test kit to reveal any potential water quality issues  
Clean front glass with cloth or magnet cleaner



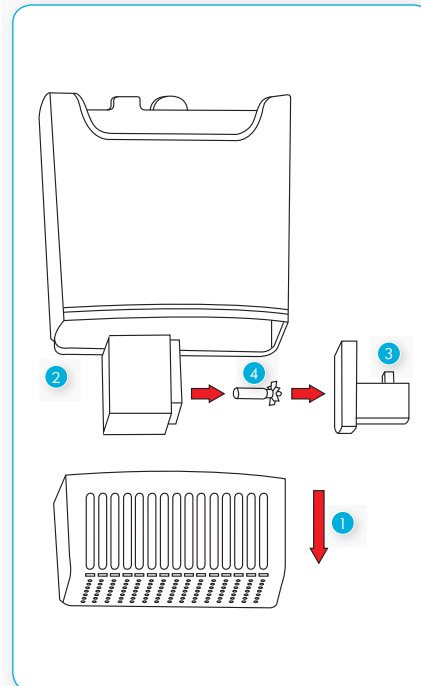
### C. Monthly care

Conduct a 25% water change  
Replace fine floss cartridge  
Replace phosphate remover pad (if included)



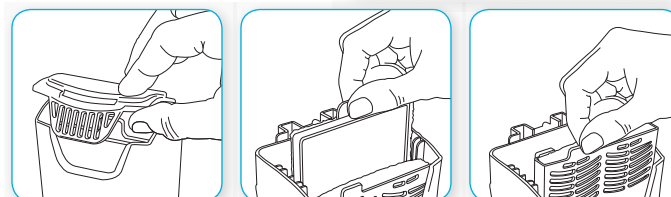
### D. 3 Monthly care

Remove intake cage (1) & impellor (2-4), clean in freshwater



### E. Annual care

Replace impellor (4)

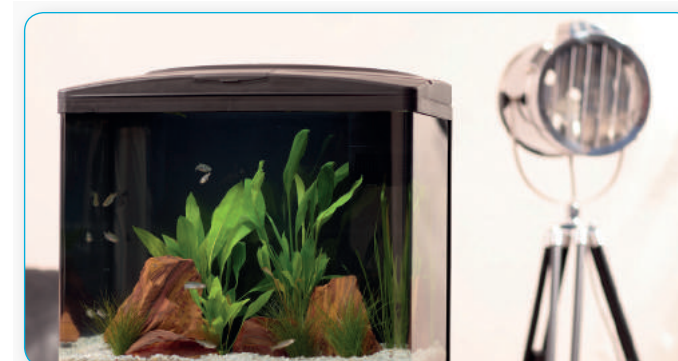


**ALWAYS TURN OFF POWER  
TO YOUR FILTER WHEN CARRYING  
OUT MAINTENANCE**

## 5. TOP TIPS FOR A HEALTHY AND SUCCESSFUL AQUARIUM

- Select the correct amount and correct species of fish for a balanced community.
- Care for your water; do recommended water changes, filter cleaning, water testing and take special care when adding new fish.
- Don't rush the early days, start slowly and carefully for long term success.
- ENJOY YOUR AQUARIUM!
- See online for further information on all aspects of keeping an aquarium and fishkeeping at [www.interpetlife.com](http://www.interpetlife.com).

If you are starting a new aquarium, go to [www.interpetlife.com](http://www.interpetlife.com) for detailed information and support on correctly introducing fish, water changes and testing your water quality.



## NEED HELP?

To ensure aquarium success visit our website for support, advice and helpful top tips on our products and fishkeeping.

